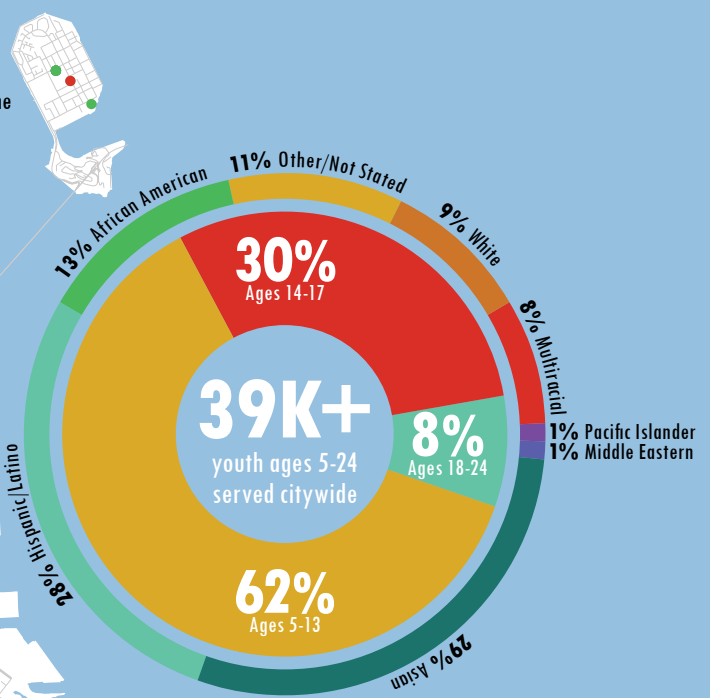
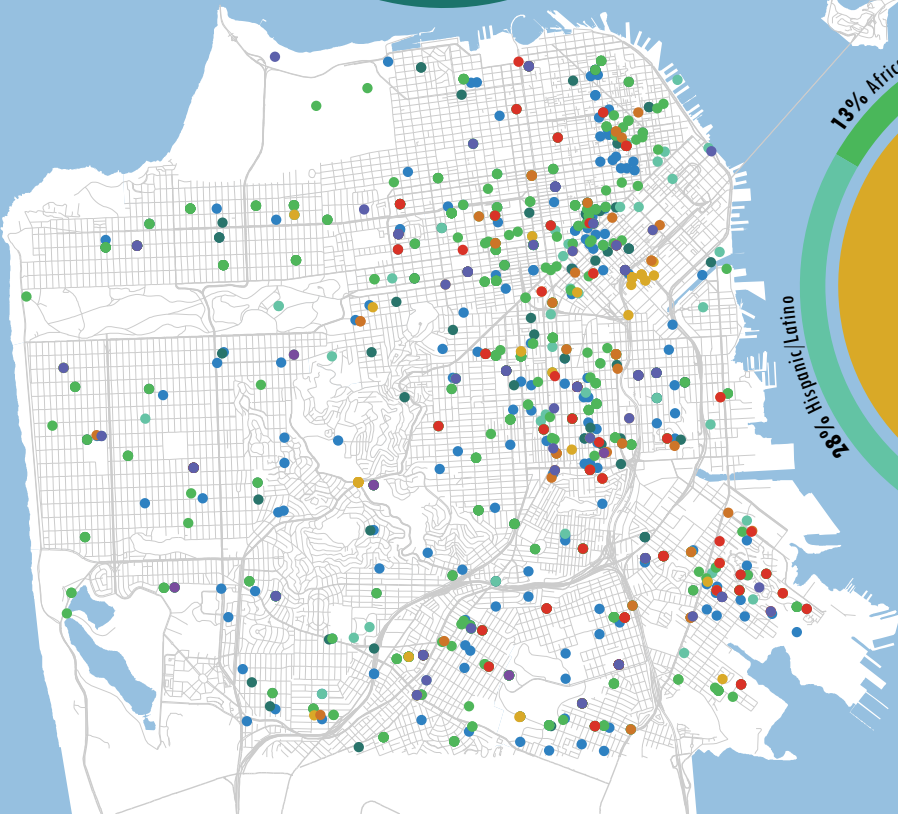
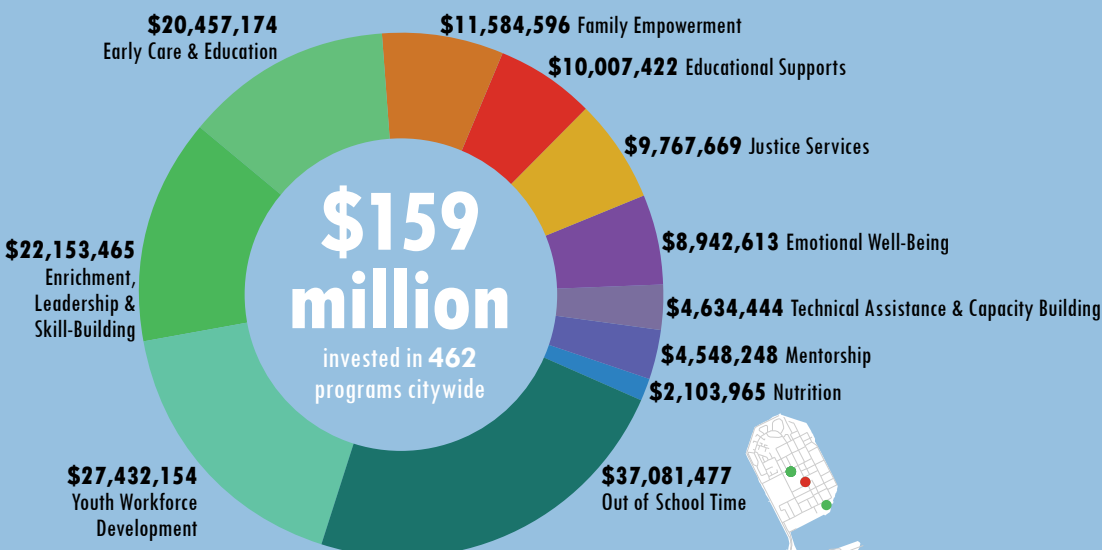




SAN FRANCISCO FY2019-20 INVESTMENTS IN YOUTH

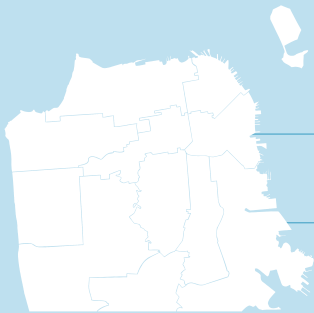


Data sources: 2019-20 DCYF Contract Management System



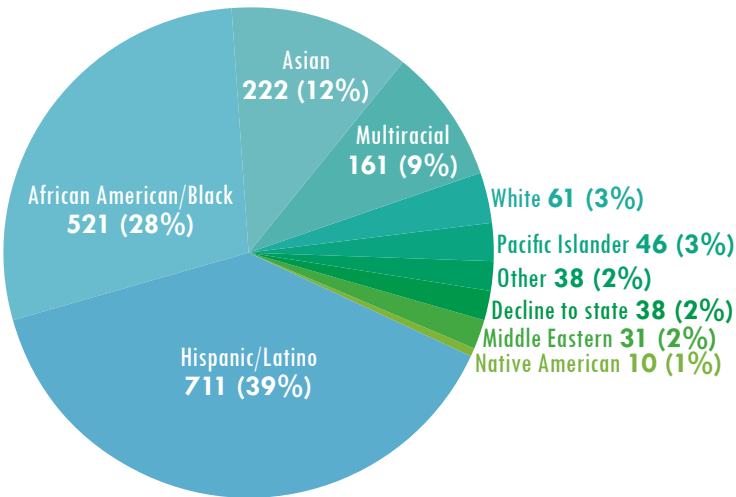
Citywide Dashboard

REPORT GENERATED 3/5/21



| | PHASE I | PHASE II | TOTAL |
|----------------------|-------------|------------|-------------|
| Sites | 54 | 30 | 84 |
| Participant Capacity | 1493 | 479 | 1972 |
| Staff | 435 | 122 | 557 |

1839 Participants Enrolled Citywide



| Homeless Youth | Youth in SROs | Youth in Public Housing | Foster Youth |
|----------------|---------------|-------------------------|--------------|
| 168 | 65 | 502 | 23 |

| Language Supports | | Home Neighborhoods (Top 8) | |
|-------------------|------------------|----------------------------|------------------|
| LANGUAGE | YOUTH | NEIGHBORHOOD | YOUTH |
| Spanish | 242 (13%) | Bayview Hunters Point | 375 (20%) |
| Chinese | 68 (4%) | Tenderloin | 196 (11%) |
| Other | 36 (2%) | Mission | 184 (10%) |
| Arabic | 10 (1%) | Visitacion Valley | 105 (6%) |
| Vietnamese | 9 (0%) | South of Market | 91 (5%) |
| Filipino | 4 (0%) | Western Addition | 75 (4%) |
| Russian | 1 (0%) | Excelsior | 70 (4%) |
| TOTAL | 370 (20%) | OMI | 59 (3%) |

In February the Community Hub Initiative added 123 participants. The greatest increase was in District 10 with 55 youth, driven by 15 at HOPE SF's Alice Griffith Apartments. Three sites opened between Districts 5, 8, and 9, including Friendship House Association of American Indians serving Native American youth.

