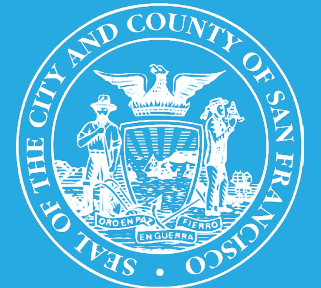




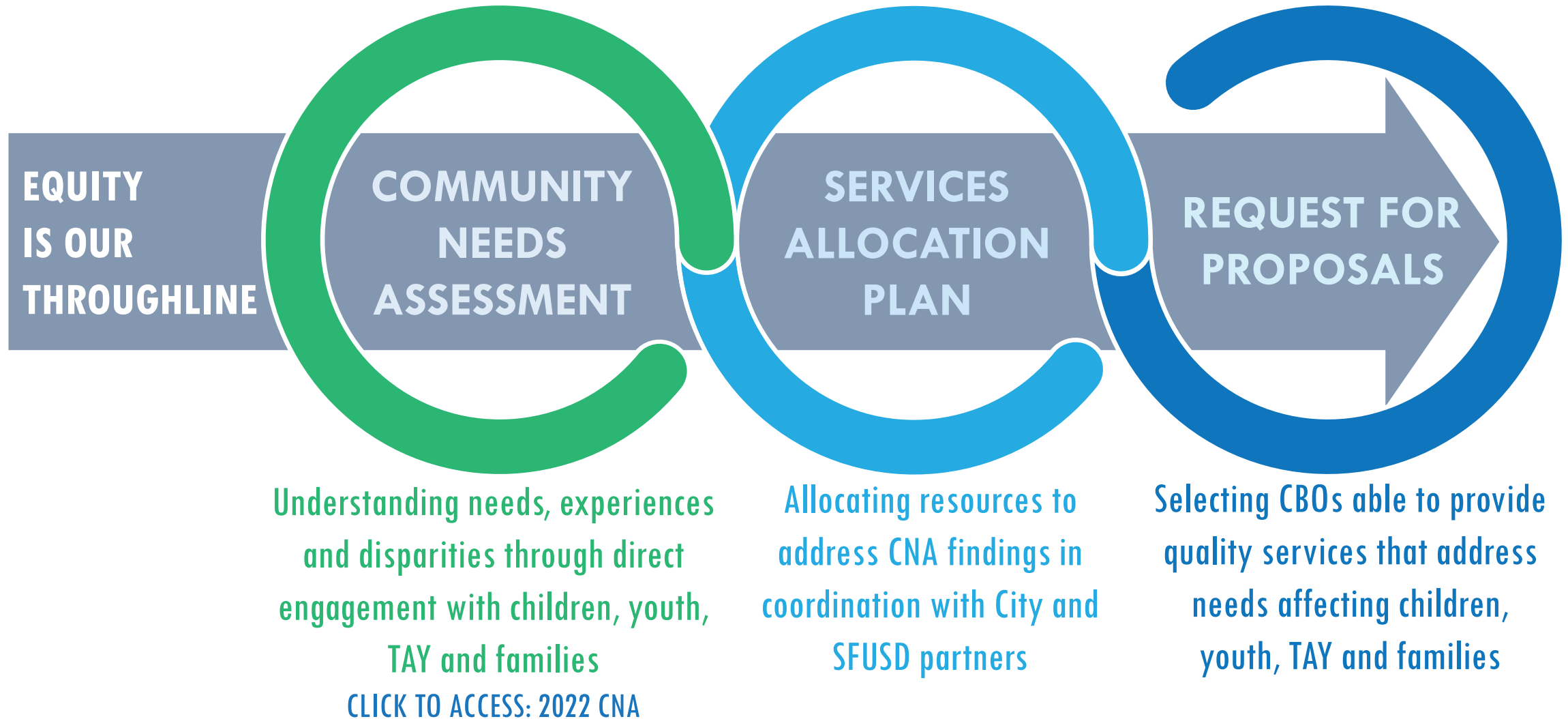
# SERVICES ALLOCATION PLAN

OVERSIGHT & ADVISORY COMMITTEE 2/13/23



# DCYF Planning Cycle

DCYF operates according to a 5-year funding cycle that includes 3 planning phases:



# SAP & RFP Timeline

JJPA  
Convening  
Feb 17<sup>th</sup>

All Grantee  
Meeting  
Mar TBD

OAC Mtg:  
SAP Vote  
May 8<sup>th</sup>

BOS SAP  
Vote  
Jun 9<sup>th</sup>

24-29 RFP  
AWARDS  
ANNOUNCED  
MAR TBD

FEB 23

MAR 23

APR 23

MAY 23

JUN 23

JUL 23

MAR 24

SPWG  
Convening  
Feb 22<sup>nd</sup>

OAC Mtg:  
SAP Release  
Apr 10<sup>th</sup>

RFP  
Related TA  
May-July

24-29 RFP  
RELEASE  
JULY TBD

YWD | Justice Partners | Mental Health  
Workgroup | Workgroup | Workgroup

Compile & Write SAP

Develop & Write RFP



**Using different  
approaches to  
achieve different results**

The 2022 CNA showed that many of the needs and disparities that have affected the City's children, youth, TAY and their families for years continue to persist.

As we enter the 24-29 funding cycle we recognize that we cannot do the same things and expect different results. Instead, we must **operate differently**, with both **intention** and **collaboration**.

# Developing the SAP & RFP

To develop the 2023 SAP and 24-29 RFP DCYF is combining internal Service Allocation and RFP workgroups with external Partner Workgroups with City and SFUSD partners.

## SERVICE ALLOCATION/ RFP WORKGROUPS

- Understand CNA findings
- Identify gaps
- Develop & refine funding approaches
- Determine target populations
- Develop RFP process, requirements & questions



## PARTNER WORKGROUPS

- Understand CNA findings
- Develop knowledge of service landscape & gaps
- Align approaches across partners
- Discuss current and ongoing coordination



## 2023 SERVICES ALLOCATION PLAN & 24-29 RFP

- Intentional funding that addresses CNA findings
- Ongoing coordination with partners to support better outcomes

# Coordinating with Our Partners

DCYF will convene Partner Workgroups and leverage coordination efforts in these service areas:



## YOUTH WORKFORCE DEVELOPMENT

Mid Jan-Mid Feb

Human Rights Commission, Juvenile Probation, Office of Economic & Workforce Development, SFUSD



## JUSTICE PARTNERS

Mid Feb-Mid Mar

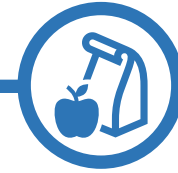
Adult Probation, District Attorney, Juvenile Probation, Sheriff, Police, Public Defender



## MENTAL HEALTH

Mid Mar-Mid Apr

Dept. of Public Health, Juvenile Probation, SFUSD



## OUT OF SCHOOL TIME

Ongoing

Recreation & Parks, SF Public Library, SFUSD



## SUPPORTS FOR FAMILIES

Ongoing

Dept. of Early Childhood, Dept. of Public Health, Human Services Agency, Mayor's Office of Housing & Community Development

**PARTNER WORKGROUPS**

**COORDINATION EFFORTS**

# Engaging Our Constituents

## JUVENILE JUSTICE PROVIDERS ASSOC. CONVENING

Feb 17<sup>th</sup>, 2023, 1:30-3pm

SAP, RFP & Results Information

Gather feedback about gaps providers are seeing

## SERVICE PROVIDERS WORKING GROUP VIRTUAL CONVENING

Feb 22<sup>nd</sup>, 2023, 10-11am

SAP, RFP & Results Information

Gather feedback about gaps providers are seeing

## DCYF ALL GRANTEE CONVENING

TBD: March, 2023

SAP, RFP & Results Information

Gather feedback about gaps providers are seeing

## RFP RELATED TECHNICAL ASSISTANCE

TBD: May-July 2023

Workshops and training

TA for applicants on applying to the 24-29 RFP

Click here to complete the → [SAP PRIORITIES SURVEY](#)

Fill it out and share it with your colleagues as well as the participants & families you work with

# DCYF'S RESULT AREAS

A man with glasses and a beard is holding a baby. A young girl is leaning over him. The man is wearing a necklace with a tag that says "I LOVE TO SEE MY PEOPLE DOING GOOD".

**CHILDREN & YOUTH ARE  
SUPPORTED BY NURTURING  
FAMILIES & COMMUNITIES**

**CHILDREN & YOUTH  
ARE PHYSICALLY &  
EMOTIONALLY HEALTHY**

A man with a black headband is looking at a woman who is speaking into a microphone. They appear to be in a meeting or a presentation.

**CHILDREN & YOUTH  
ARE READY TO LEARN  
& SUCCEED IN SCHOOL**

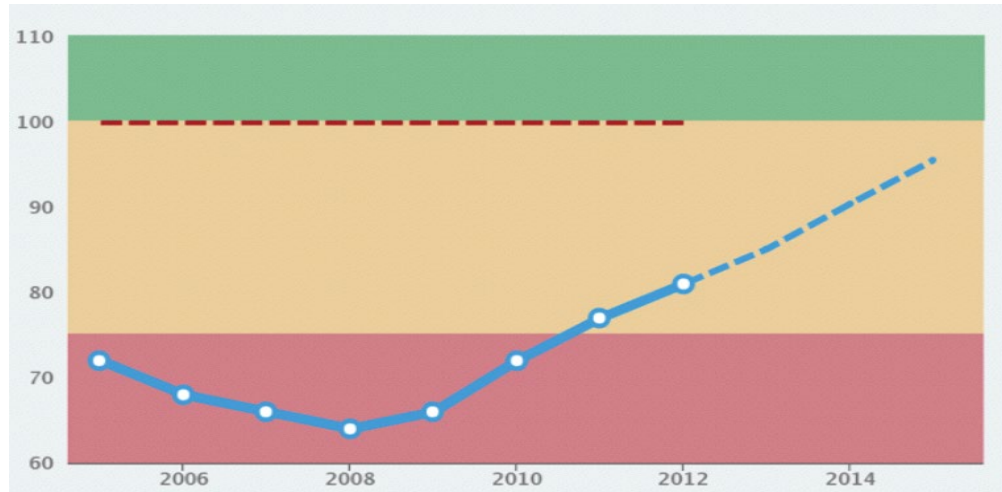
**YOUTH ARE READY  
FOR COLLEGE, WORK &  
PRODUCTIVE ADULTHOOD**



# Guiding Frameworks

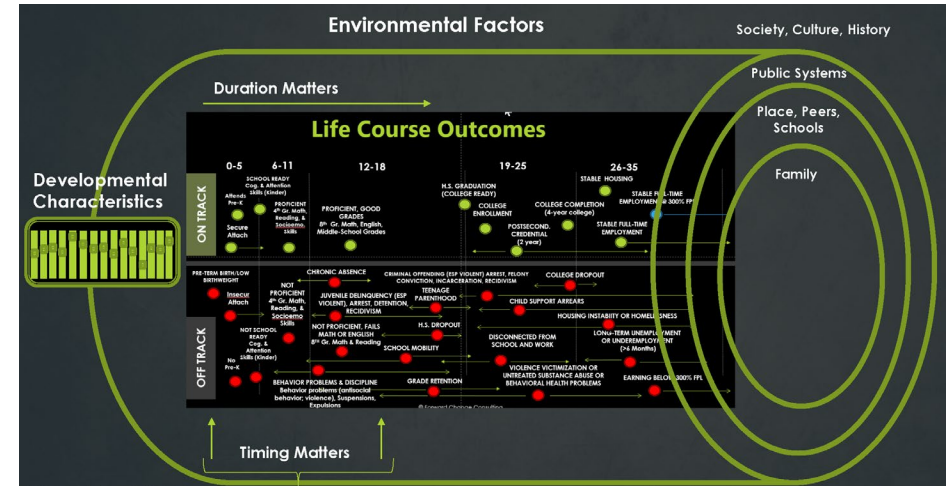
Development of our Result Areas and the services they contain was informed by 2 frameworks:

## Results-Based Accountability



Used to create Results Areas during 2017 SAP process.  
Current process adapted from RBA.

## Life Course Framework



Helps us think about services needed by developmental stage as well as approaches for both on and off-track youth and TAY

[Click to Access: Life Course Framework Presentation](#)

Conditions needed for children,  
youth, TAY & families...

...which make these  
results possible

in their families  
& communities

within  
themselves



Children & Youth Are  
Supported By Nurturing  
Families & Communities

Children & Youth Are  
Physically & Emotionally  
Healthy

Children & Youth Are  
Ready To Learn &  
Succeed In School

Youth Are Ready For  
College, Work &  
Productive Adulthood

# CITYWIDE/ UNIVERSAL NEED

All SF children, Youth, TAY and their families

## CONCENTRATED NEED

## CHARACTERISTICS OF INCREASED NEED

- African American, American Indian/ Alaska Native, Hispanic/LatinX & Pacific Islander children, youth, TAY & families
- Low-income Asian children, youth, TAY & families
- Families economically impacted by COVID
- Individuals with disabilities & their families

- English Learner
- Foster Youth
- LGBTQQ
- Teen Parent
- Under-housed
- Undocumented
- Children of Incarcerated Parents
- Justice System Involvement
- Exposure to Violence, Abuse or Trauma
- Academic Underperformance or Disconnect from School



Children & youth are supported by nurturing families & communities





# CHILDREN & YOUTH ARE SUPPORTED BY NURTURING FAMILIES & COMMUNITIES

Associated with programs, resources, supports and activities that increase the ability for families to nurture their children and for communities to be safe, connected and engaged.



0 - 5



6 - 13



14 - 17



18 - 24

## DCYF LANES

### OUR LANE

- Caring Adults
- Social Emotional Learning
- Community Building & Engagement
- Community Events & Activities
- Family Support Programs
- Access To Resources

### OUR LANE WITH PARTNERS

- Childcare (DEC)
- Family Resource Centers (DEC)
- Child Welfare (HSA)
- Resources For Basic Needs (HSA)
- Economic Supports & Resources (HSA, MOHCD, HRC)
- Violence Prevention & Response (DPH, MYR)
- Supports For Homeless Families (HSA/HSH)

### NOT OUR LANE

- Public Safety (SFPD, DA, PD)
- Housing (HSH, HSA)



## CURRENT SERVICES WITH PRIMARY IMPACT

### FAMILY EMPOWERMENT

#### FUNDING STRATEGIES

Community Collaboratives

#### DCYF INITIATIVES

Safe & Sound Talkline

#### PARTNERSHIPS

Family Resource Centers (DEC)

### JUSTICE SERVICES

#### PARTNERSHIPS

Street Violence Intervention Prgm. (DPH)

### MENTORSHIP

#### FUNDING STRATEGIES

Mentorship

### OUTREACH & ACCESS

#### DCYF INITIATIVES

Our415.org

Resource Fairs

Click to Access: [DCYF's Service Area Guide](#)

**Children & youth  
are physically &  
emotionally healthy**





# CHILDREN & YOUTH ARE PHYSICALLY & EMOTIONALLY HEALTHY

Associated with programs, resources, supports and activities that promote physical, emotional, behavioral and mental health as well as healing from trauma.



0 - 5



6 - 13



14 - 17



18 - 24

## DCYF LANES

### OUR LANE

Caring Adults  
Social Emotional Learning  
CBO Based Sports Programs  
CBO Based Wellness Programs

### OUR LANE WITH PARTNERS

Mental & Behavioral Health (DPH)  
Physical Fitness And Wellness (RPD, DPH)  
Healing & Trauma (DPH)  
Food & Nutrition (HSA, DPH)  
Health Education Programs (DPH)

### NOT OUR LANE

Primary & Dental Care (DPH)





## CURRENT SERVICES WITH PRIMARY IMPACT

### EMOTIONAL WELL BEING

#### PARTNERSHIPS

Black/African Amer. Mental Health Init. (DPH)

TAY System of Care (DPH)

Wellness Initiative (DPH)

### ENRICHMENT, LEADERSHIP & SKILL BUILDING

#### FUNDING STRATEGIES

Sports & Physical Activity

### JUSTICE SERVICES

#### PARTNERSHIPS

Intensive Supervision & Clinical Support (DPH)

### OUTREACH & ACCESS

#### DCYF INITIATIVES

Nutrition Programs

**Children & youth  
are ready to learn  
& succeed in school**





# CHILDREN & YOUTH ARE READY TO LEARN & SUCCEED IN SCHOOL

Associated with programs, resources, supports and activities that provide opportunities for youth to learn, gain SEL skills, engage educationally and have access to needed supports.



0 - 5



6 - 13



14 - 17

## DCYF LANES

### OUR LANE

- Caring Adults
- Social Emotional Learning
- CBO Based OST Programs
- CBO Based Academic Supports
- CBO Based Enrichment Programs

### OUR LANE WITH PARTNERS

- Academic & Literacy Supports & Resources (SFUSD)
- Absenteeism & Truancy (SFUSD)
- Afterschool & Summer Programs (SFUSD, RPD, SFPL)
- Early Care & Education Programs (DEC)
- Safe Passage (SFUSD)

### NOT OUR LANE

- TK-12 Public Schools (SFUSD)
- School Transportation (SFUSD, MTA)



## CURRENT SERVICES WITH PRIMARY IMPACT

### EARLY CARE & EDUCATION

#### PARTNERSHIPS

Early Learning Scholarships (DEC)

### EDUCATIONAL SUPPORTS

#### FUNDING STRATEGIES

Academic Supports  
Literacy Supports

#### DCYF INITIATIVES

Summer Transitions  
Truancy Assessment & Resource Center

### ENRICHMENT, LEADERSHIP & SKILL BUILDING

#### FUNDING STRATEGIES

Arts & Creative Expression  
Identity Formation

Science, Technology, Engineering & Math  
Service Learning

### OUT OF SCHOOL TIME

#### FUNDING STRATEGIES

Beacon  
Comprehensive Year Round & Summer

#### DCYF INITIATIVES

Summer Together

#### PARTNERSHIPS

Equitable Access (SFUSD)

[Click to Access: \*\*DCYF's Service Area Guide\*\*](#)



Youth are ready  
for college, work &  
productive adulthood





# YOUTH ARE READY FOR COLLEGE, WORK & PRODUCTIVE ADULthood

Associated with programs, resources, supports and activities that help youth and TAY gain exposure, skills and abilities that prepare them for successful transitions into adulthood.



14 - 17

18 - 24

## DCYF LANES

### OUR LANE

Caring Adults  
Social Emotional Learning  
CBO Based College Prep. Programs  
Justice Involved Youth Programs  
Youth Empowerment Programs

### OUR LANE WITH PARTNERS

YWD Programs (SFUSD, OEWD, HRC)  
Career Oriented Education (SFUSD, CCSF)  
Undocumented Youth Programs (OCEIA)  
Higher Education (CCSF)  
Foster Youth (HSA)  
Financial Empowerment (TTX)

### NOT OUR LANE

Career Employment (OEWD)



# CURRENT SERVICES WITH PRIMARY IMPACT

## EDUCATIONAL SUPPORTS

### FUNDING STRATEGIES

Academic Supports  
Alternative Education

### DCYF INITIATIVES

Free City College  
Summer Transitions  
Truancy Assessment & Resource Center

## ENRICHMENT, LEADERSHIP & SKILL BUILDING

### FUNDING STRATEGIES

Arts & Creative Expression  
Identity Formation  
Science, Technology, Engineering & Math  
Service Learning  
Youth Leadership, Engagement & Organizing  
Youth Led Philanthropy

## JUSTICE SERVICES

### FUNDING STRATEGIES

Cultural Programming  
Detention Based  
Girls' & Young Women's Programming  
Multi Service  
Young Adult Court Case Management

### DCYF INITIATIVES

Community Assessment & Referral Center



# CURRENT SERVICES WITH PRIMARY IMPACT

## MENTORSHIP

### FUNDING STRATEGIES

Connective Services

## YOUTH WORKFORCE DEVELOPMENT

### FUNDING STRATEGIES

Career Awareness

High School Partnerships

Youth Workforce Development

### DCYF INITIATIVES

MYEEP

Opportunities for All Intermediary

SF YouthWorks

### PARTNERSHIPS

Workreation (RPD)



# Discussion: Identifying the Gaps



CHILDREN & YOUTH ARE SUPPORTED BY NURTURING FAMILIES & COMMUNITIES

CHILDREN & YOUTH ARE PHYSICALLY & EMOTIONALLY HEALTHY

CHILDREN & YOUTH ARE READY TO LEARN & SUCCEED IN SCHOOL

YOUTH ARE READY FOR COLLEGE, WORK & PRODUCTIVE ADULTHOOD

What gaps in services and systems are you seeing for children, youth, TAY and their families in San Francisco?



**Thank you!**